



Notes:

## MODEL #135MP-TF

### Automatic Rotary Time Filler

#### **Description:**

Automatic rotary filler featuring stainless steel construction, automatic denesting, automatic container transfer, time filling and automatic lidding.

#### **Products:**

Ice cream, frozen yogurt, whipped butter or similar product that does not seek its own level and can be supplied continuously.

#### **Key Features:**

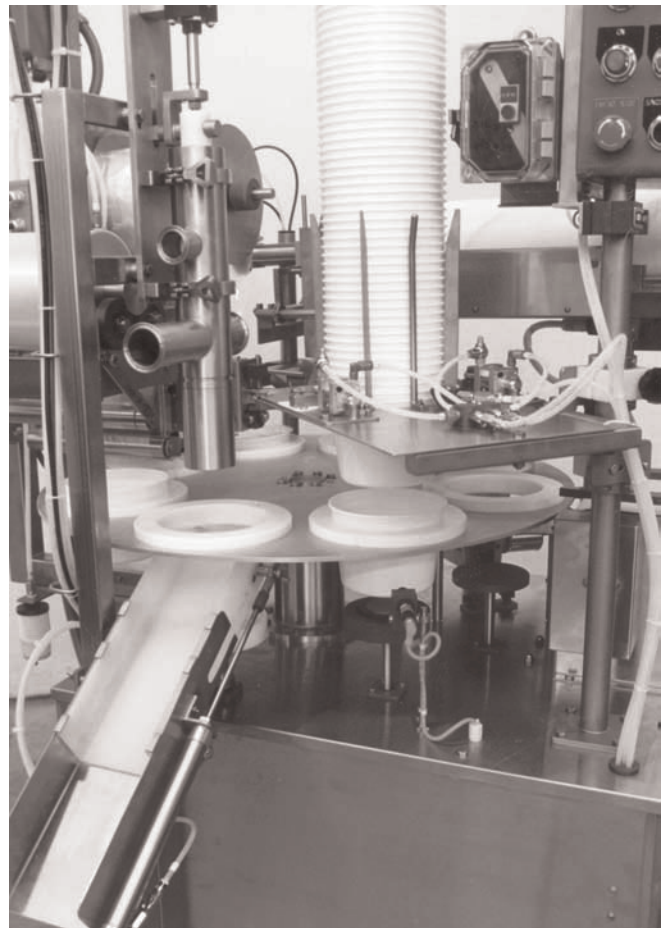
- Simple, reliable control package
- Timed fill valve with sniffer action
- Heavy duty Camco® eight station precision indexer
- Variable speed inverter drive with washdown motor
- Auger denester standard
- Container lift at fill station
- Wide variety of custom tooling available
- Speeds to 60 cpm, depending on containers and product being filled
- 304 stainless steel construction
- Affordably priced

#### **Container Size Range:**

- 4 ounce through 1/2 gallon round and square-round

#### **Options Available:**

- Tooling for additional container sizes
- Tamper evident membrane seal section
- Variegator, single or dual flavor
- Neapolitan adapter
- Revel adapter
- Deluxe three port sniffer valve assembly
- Tub spinner
- Date coder



Camco® is a registered trademark of Industrial Motion Control, LLC



Notes:

## MODEL #135MP-TF

### Features and Benefits

#### **Simple Reliable Control Circuits:**

Four direct acting pneumatic cam valves actuated by adjustable cams mounted for easy access. It doesn't get any simpler than that. Eliminates need to adjust timing as the machine speed changes.

- Saves you money on original purchases
- Saves you from expensive down time
- Saves you money on service trips

#### **Timed Fill Valve with Sniffer Action:**

Unique design draws product up the fill nozzle when closing.

- Provides a neat clean fill
- Precise timing provides accurate fill

#### **Heavy Duty Camco® Indexer:**

Table index motion is done with Camco® eight station precision indexer.

- Provides extremely smooth motion
- Very precise positioning
- Durable design, typically will run millions of trouble-free cycles

#### **Variable Speed AC Inverter Drive:**

Machine speed is AC inverter.

- Provides exact speed control day in and day out
- Speeds adjust to 1/100<sup>th</sup> Hertz
- Long lasting AC motor means lower maintenance costs

#### **Auger Denester:**

Pneumatically operated denester separates the cups using four augers designed to feed your container.

- Provides positive separation of each container
- Tested at speeds up to 120 cpm to assure reliability at slower production rates
- Proven design provides high reliability

Camco® is a registered trademark of Industrial Motion Control, LLC



Notes:

# MODEL #135MP-TF

## Specifications and Elevation Drawing

**WIDTH:**  
3' 4" (101.7 CM)

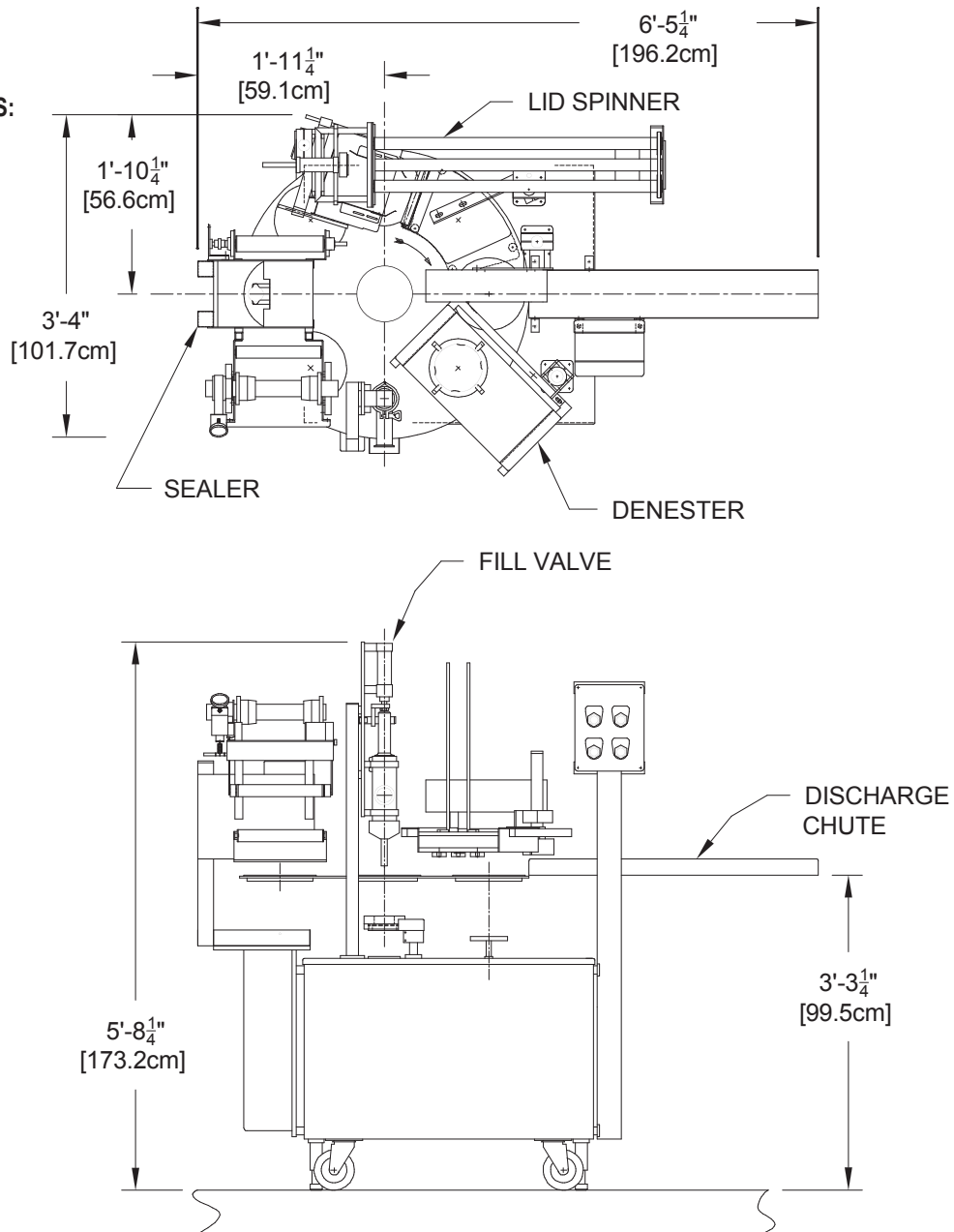
**ELECTRICAL REQUIREMENTS:**  
220V, 3 PHASE, 60 HZ, 15 AMP

**LENGTH:**  
6' 5 1/4" (196.2 CM)

**DRIVE/INDEX TYPE:**  
CAMCO® INDEXER, AC DRIVE

**SHIPPING WEIGHT:**  
1200 LBS

**AIR REQUIREMENTS:**  
20 CFM @ 80 PSI



Camco® is a registered trademark of Industrial Motion Control, LLC