



Notes:

MODEL #135MP-PF

Automatic Rotary Piston Filler

Description:

Automatic rotary filler featuring stainless steel construction, automatic denesting, automatic container transfer, volumetric piston fill and automatic lidding.

Products:

Potato salad, cottage cheese, sour cream or similar product that can be pumped with a piston depositor.

Key Features:

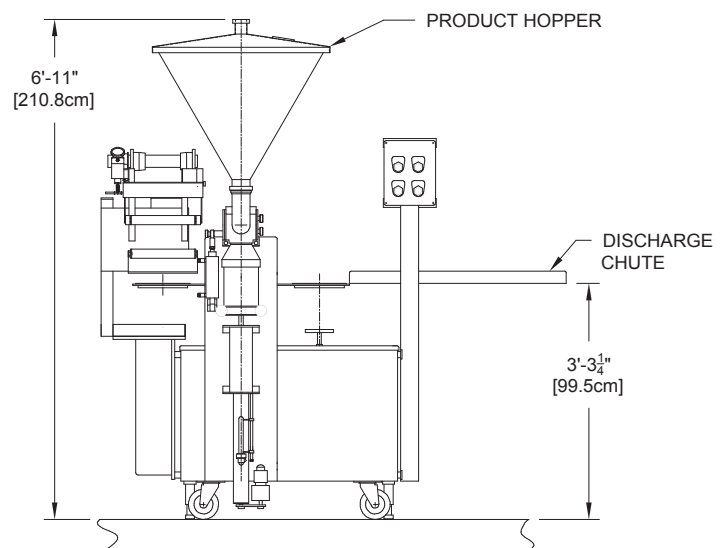
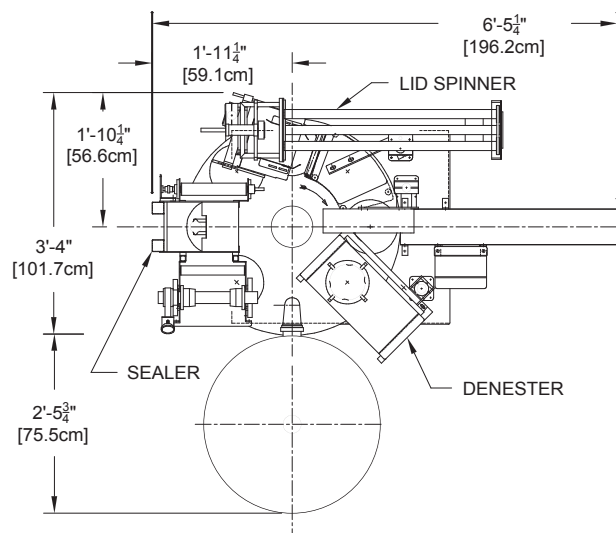
- Simple, reliable control package
- Extremely accurate volumetric piston filling
- Heavy duty Camco® eight station precision indexer
- Index on demand, DC drive with 2 HP washdown motor
- Auger denester standard
- Choice of three different volumetric piston fillers in machine or floor mounted
- Container lift at fill station
- Wide variety of custom tooling available
- Speeds to 50 cpm (depending on containers and product being filled)
- 304 stainless steel construction
- Affordably priced

Container Size Range:

- 8 through 80 ounce round or square containers

Options Available:

- Tooling for additional container sizes
- Tamper evident membrane seal section
- 112TP floor mounted depositor/transfer pump
- 133DP depositor, machine mounted
- 135DP depositor, machine mounted
- No container/no fill feature
- 2" rotary cut-off valve
- Discharge conveyor
- Date coder



ELECTRICAL REQUIREMENTS: 220V, 1 Phase, 5 amp
AIR REQUIREMENTS: 10 cfm @ 80 psi

Camco® is a registered trademark of Industrial Motion Control, LLC.



Notes:

MODEL #135MP-PF

Features and Benefits

Simple Reliable Control Circuits:

Four direct acting pneumatic cam valves actuated by adjustable cams mounted for easy access. It doesn't get any simpler than that. Eliminates need to adjust timing as the machine speed changes.

- Saves you money on original purchases
- Saves you from expensive down time
- Saves you money on service trips

Extremely Accurate Volumetric Piston Fill:

Fill volume is determined by the fill cylinders stroke length. Volume is adjusted by changing the position of the fill cylinder stop bolt.

- Provides very accurate and repeatable dose
- Simple fill adjustment

Heavy Duty Camco® Indexer:

Table index motion is done with Camco® eight station precision indexer.

- Provides extremely smooth motion
- Very precise positioning
- Durable design, typically will run millions of trouble-free cycles

Auger Denester:

Pneumatically operated denester separates the cups using four augers designed to feed your container.

- Provides positive separation of each container
- Tested at speeds up to 120 cpm to assure reliability at slower production rates
- Proven design provides high reliability