



Notes:

MODEL #135LD-TF

Automatic Rotary Time Filler with Deluxe Control Package

Description:

Automatic rotary filler featuring stainless steel construction, automatic denesting, automatic container transfer, time filling and automatic lidding.

Products:

Ice cream, frozen yogurt, whipped butter or similar product that does not seek its own level and can be supplied continuously.

Key Features:

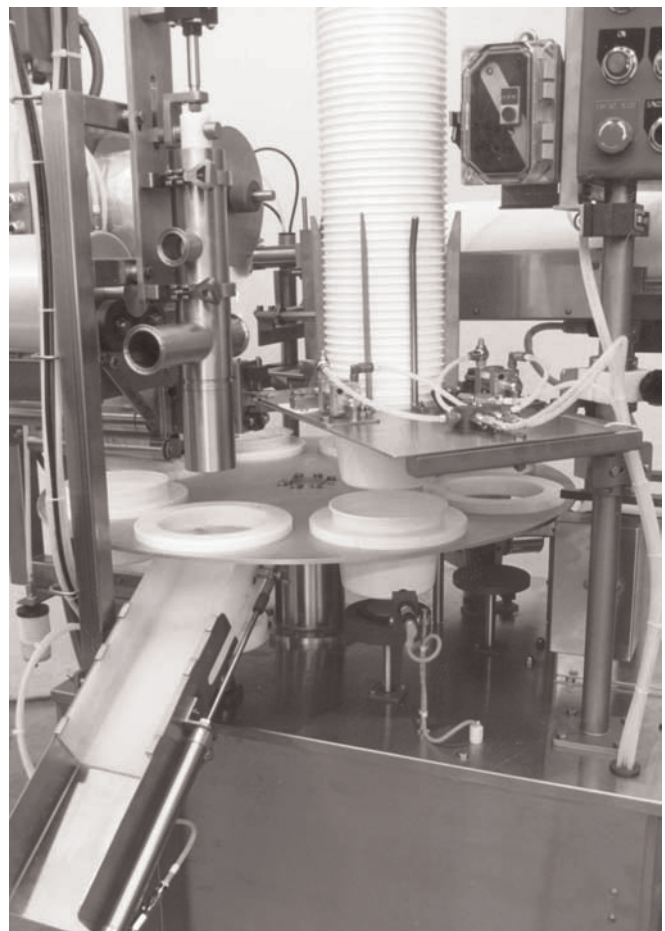
- Deluxe control package featuring an "Electro-cam"TM programmable limit switch with Mitsubishi PLC controller
- Timed fill valve with sniffer action
- Heavy duty Camco[®] eight station precision indexer
- Variable speed inverter drive with washdown motor
- Auger denester standard
- Container lift at fill station
- Wide variety of custom tooling available
- Speeds to 60 cpm (depending on containers and product being filled)
- 304 stainless steel construction

Container Size Range:

- 4 ounce through 1/2 gallon round and square-round

Options Available:

- Tooling for additional container sizes
- Tamper evident membrane seal section
- Variegator, single or dual flavor
- Neapolitan adapter
- Revel adapter
- Deluxe three port sniffer valve assembly
- Tub spinner
- Date coder



Camco[®] is a registered trademark of Industrial Motion Control, LLC



Notes:

MODEL #135LD-TF

Features and Benefits

Deluxe Control Package Featuring an Electro™ Cam Programmable Limit Switch with PLC Logic Controller:

This control package provides the ultimate in flexibility for customers who tool for multiple sizes or who want to easily customize or integrate our machine at their plant.

- Can be set up with multiple programs for each container size
- “On the fly” timing changes
- Timed outputs and speed compensation make fine tuning very precise

Timed Fill Valve with Sniffer Action:

Unique design draws product up the fill nozzle when closing.

- Provides a neat clean fill
- Precise timing provides accurate fill

Heavy Duty Camco® Indexer:

Table index motion is done with Camco® eight station precision indexer.

- Provides extremely smooth motion
- Very precise positioning
- Durable design, typically will run millions of trouble-free cycles

Variable Speed AC Inverter Drive:

Machine speed is AC inverter.

- Provides exact speed control day in and day out
- Speeds adjust to 1/100th Hertz
- Long lasting AC motor means lower maintenance costs

Auger Denester:

Pneumatically operated denester separates the cups using four augers designed to feed your container.

- Provides positive separation of each container
- Tested at speeds up to 120 cpm to assure reliability at slower production rates
- Proven design provides high reliability

Camco® is a registered trademark of Industrial Motion Control, LLC



Notes:

MODEL #135LD-TF

Specifications and Elevation Drawing

WIDTH:
3' 4" (101.7 CM)

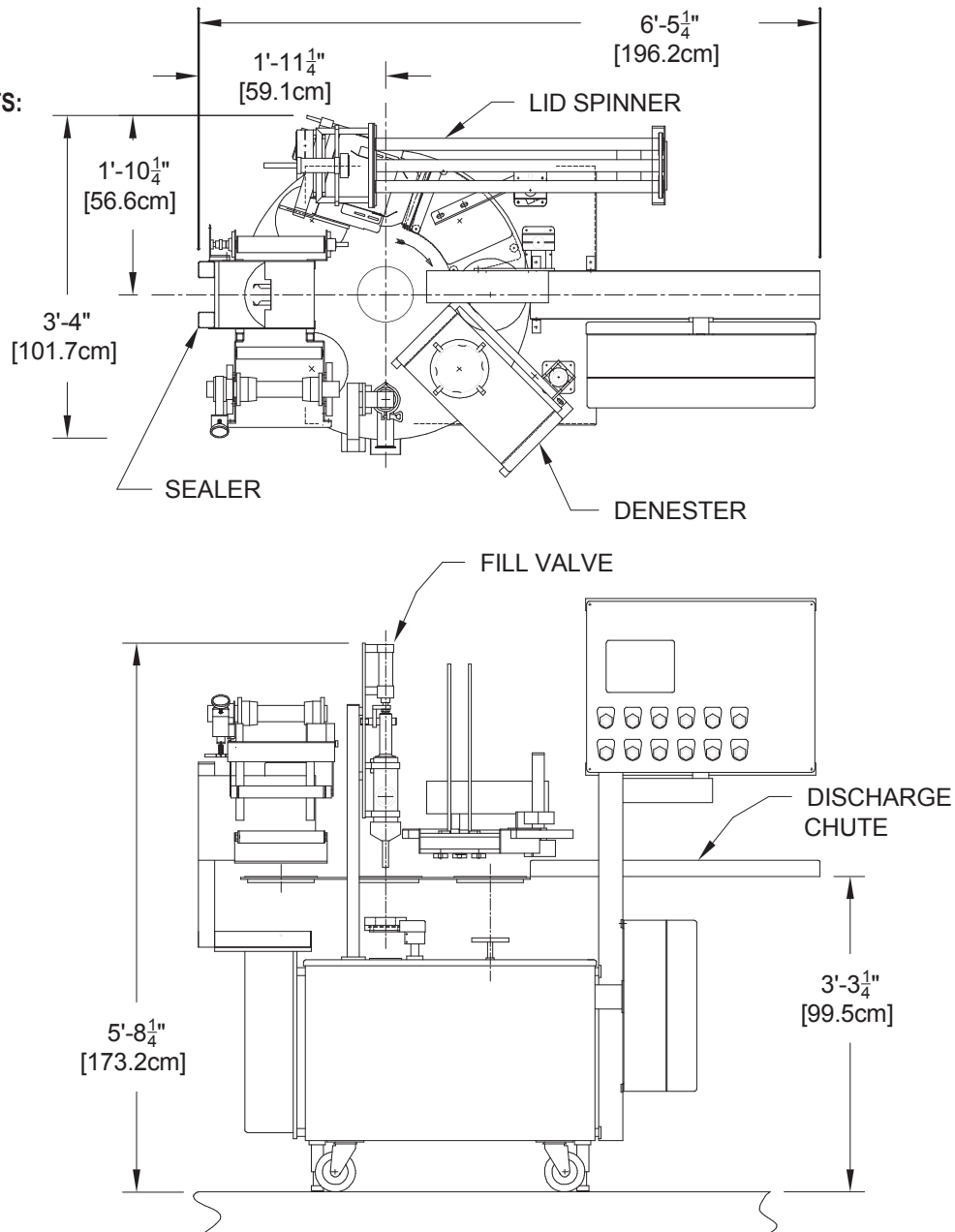
ELECTRICAL REQUIREMENTS:
220V, 3 PHASE, 60 HZ, 15 AMP

LENGTH:
6' 5 1/4" (196.2 CM)

DRIVE/INDEX TYPE:
CAMCO® INDEXER, AC DRIVE

SHIPPING WEIGHT:
1200 LBS

AIR REQUIREMENTS:
20 CFM @ 80 PSI



Camco® is a registered trademark of Industrial Motion Control, LLC