



T.D. Sawvel Co. Inc.

Providing Automated Packaging Solutions Since 1976

Notes:

MODEL #120-SRVO

Automatic High Speed Volumetric Filler / Servo Driven Filler / Inline Filler / Sawvel Filler / Square Round Filler

Description:

Automatic inline servo driven filler featuring continuous product flow, automatic denesting, container transfer, Sawvel's exclusive Bottom-Up[®] volumetric filling and automatic lidding. Designed for 32 through 64 ounce round or square-round containers.

Products:

Ice cream, frozen yogurt, whipped butter or similar product that does not seek its own level and can be supplied continuously.

Key Features:

- Servo driven progressive pitch auger denester
- Servo driven split pocket container indexer
- Sawvel's exclusive Bottom-Up[®] volumetric fill with servo driven clean-wipe feature
- PLC controlled
- Continuous product flow
- 90° rotation prior to lidding
- Wide range of custom tooling
- Automatic bypass controls; diverts product if no container is present
- Right or left hand operation
- Speeds to 80 cpm
- 304 stainless steel construction

Container Size Range:

- 32 ounce through 1/2 gallon square-round containers
- 32 ounce through 1/2 gallon round containers

Container Types:

- Nestle paper or plastic



Options Available:

- Tooling for additional container sizes
- Deluxe neapolitan fill head for linear flavor separation
- Variators: single and dual flavor, choice of air or electric drive
- 1.5" or 3" bypass valves for ice cream and syrup
- Marbling blender for multi-color mixes; creates a distinctive pattern while maintaining identity
- Inline blender provides uniform color from three-barrel freezer
- Customized control packages

tdsawvel.com

Bottom-Up[®] is a registered trademark of T.D. Sawvel Co., Inc.

Toll Free: 877.488.1816 • Phone 763.479.4322 • Fax 763.479.3517 • 5775 Highway 12 West • Maple Plain, MN 55359 U.S.A



MODEL #120-SRVO

Features and Benefits

Servo Driven Progressive Pitch Auger Denester:

Servo drive motors provide the power, reliability and programmability to be smooth and very fast.

- Progressive pitch screws provide gentle separation and quick loading into the containers shuttle
- Eliminating the vacuum pick cylinder allows denesting and container indexing to be done simultaneously for
- Servo drive provides reliable denester cycle rates in excess of 100 containers per minute
- You can expect more than 100 million cycles from these motors

High Production Speeds With a Very Compact Foot Print:

You can fit two of these into less space than one large dual lane filler and run faster. Dimensions are 2' 4 3/8" wide by 9' 2 5/8" long.

- Space is not cheap; this model makes your valuable space available for other profit centers
- Two machines can fill at up to 160 cpm!
- You have more production flexibility; run two flavors simultaneously
- Save up to \$125,000.00 on the purchase compared to one large dual lane machine!
- Small enough to be moved in and out of the line if you need to

Servo Driven Split Packet Container Indexer:

Servo drive motors provide the power, reliability and programmability to be smooth and very fast.

- Split pocket design eliminated all possible crash points of hard parts
- Simple mechanical design means very little time required when it is time to rebuild
- Servo drive provides reliable container index rates in excess of 80 containers per minute
- You can expect more than 100 million cycles from these motors



Servo Driven Progressive Pitch Auger Denester



Servo Driven Split Packet Container Indexer



Notes:

MODEL #120-SRVO

Features and Benefits

Sawvel's Exclusive Bottom-Up® Filling:

Each container rises to meet the incoming product. The product pushes the container down as it fills.

- Eliminates air pocket formation
- Removes air pockets coming from freezer or ingredient feeder
- Every container fills to the exact same volume, no more over or under fill complaints
- Percentage of freezer overrun determines weight

Continuous Product Flow:

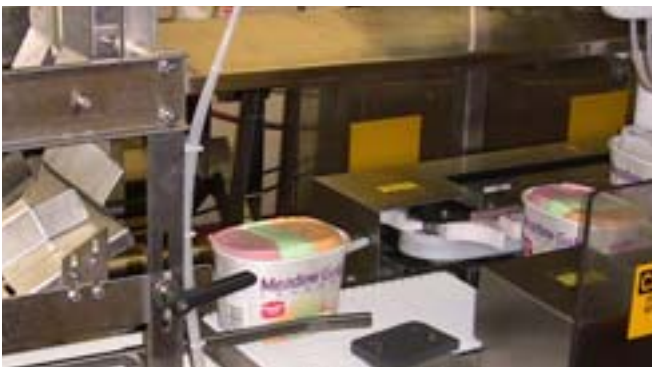
Each container enters the fill station without product flow interruption.

- Straight fill pipe maintains pattern integrity, allowing you to produce the industries most attractive variegated and multi-colored patterns
- Reduced back pressure at the freezer
- Higher production rates are possible

90° Rotation Prior to Lidding:

Each container is rotated 90° prior to the lid placer.

- Assures a clean lidding application
- Eliminates the need to wipe the container after lidding



90° Rotation Prior to Lidding



Bottom-Up Filling and Deluxe Neapolitan Fill Head



Pattern Shown Made with Kemp's Custom Divided Fill Head

Below: Cut-Away



Right or Left Hand Operation:

Can be field converted from right hand to left operation.

- If your floor plan changes you don't need to buy another filler



T.D. Sawvel Co. Inc.

Providing Automated Packaging Solutions Since 1976

Notes:

MODEL #120-SRVO

Specifications and Elevation Drawing

Air Requirements:

20 cfm @ 80 psi

Width:

2' 4 3/8" (72.07 cm)

Electrical Requirements:

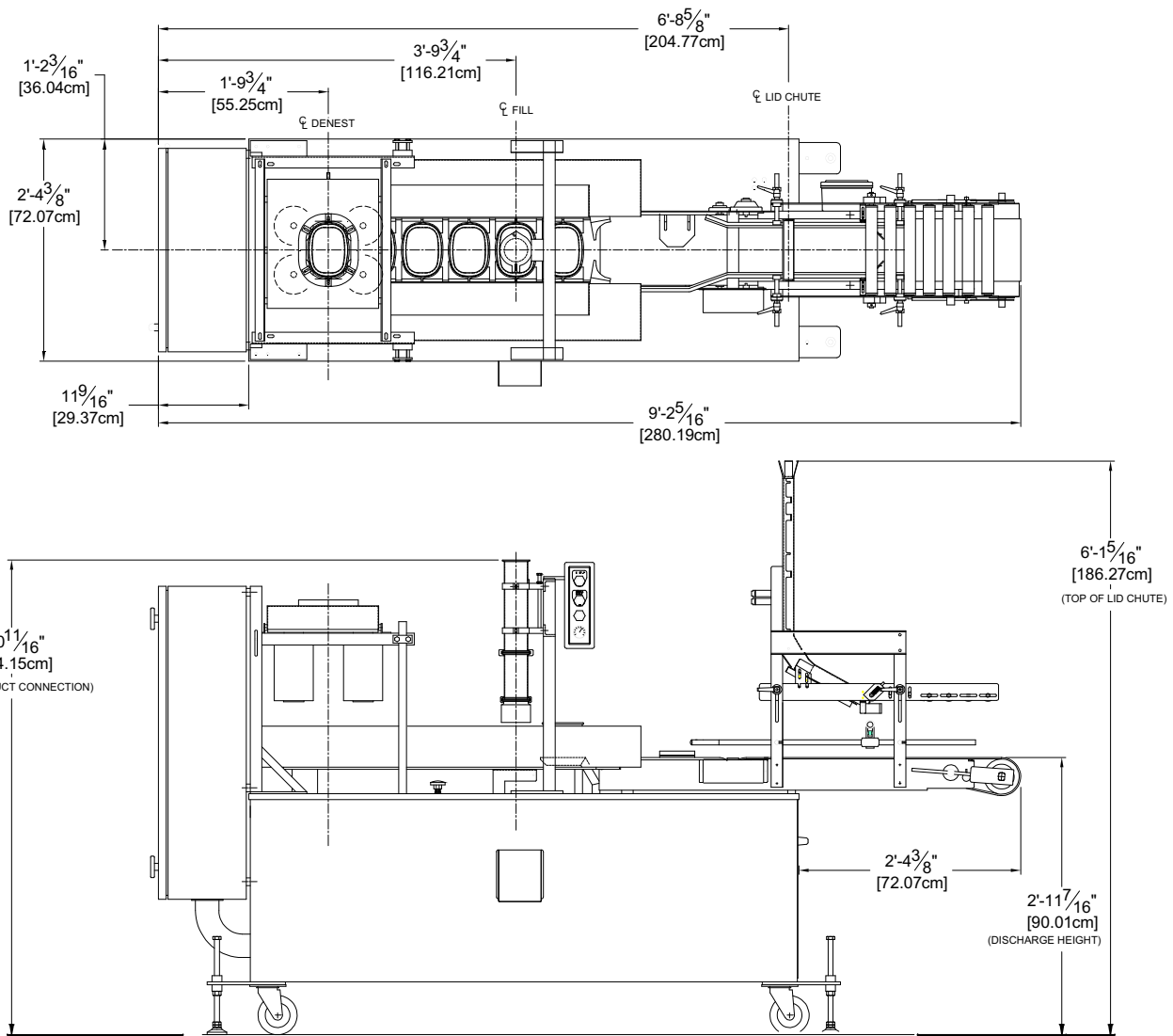
220V AC, 18 amp, 60 Hz

Length:

9' 2 5/16" (280.19 cm)

Shipping Weight:

1300 lbs



tdsawvel.com

Toll Free: 877.488.1816 • Phone 763.479.4322 • Fax 763.479.3517 • 5775 Highway 12 West • Maple Plain, MN 55359 U.S.A