



T.D. Sawvel Co. Inc.

Providing Automated Packaging Solutions Since 1976

Notes:

MODEL #113A

Scale Controlled Liquid Filler / 5 Gallon Pail Filler /
Fill-to-Weight Scale Filler / Liquid Pail Filler / Inline
Liquid Filler / Automatic Pail Filler

Description:

Automatic dual station scale filler featuring stainless steel construction and the latest digitally controlled scale for an extremely accurate fill.

Products:

Liquid or similar self leveling product such as donut icing, glazing, edible oils, fruit flavorings, mayonnaise and sauces.

Key Features:

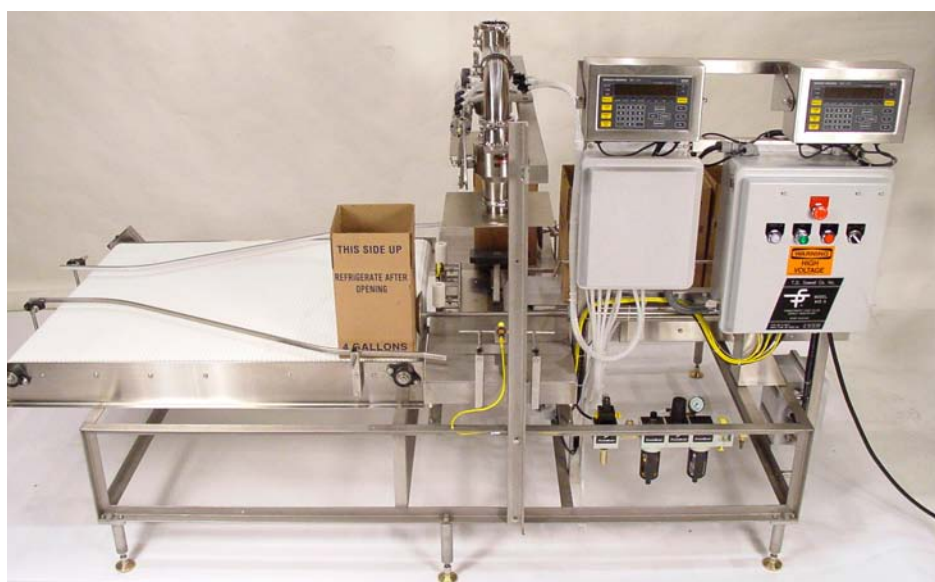
- Automatic infeed, transfer and discharge for inline operation
- Continuous product flow
- Dual electronic weighing system assuring accuracy to .3oz
- Fills plastic pails and/or bag-in-box containers
- Throttle down final fill
- Quick tooling change for additional sizes
- Capable of integration into existing system
- Right or left hand operation
- Speeds to 18 cpm, depending on product characteristic
- 304 stainless steel construction

Container Size Range:

- 1 through 6 gallon

Options Available:

- Larger fill valve assemblies in 2.0", 2.5" and 3.0" sizes
- Available as a complete system utilizing Sawvel denesting, lidding and conveying equipment
- Automatic no container by-pass system
- Tooling for additional container sizes



tdsawvel.com

Toll Free: 877.488.1816 • Phone 763.479.4322 • Fax 763.479.3517 • 5775 Highway 12 West • Maple Plain, MN 55359 U.S.A



MODEL #113A

Features and Benefits

Continuous Product Flow:

Product flow alternates back and forth between the two fill stations. Product can be supplied with either gravity or positive pump.

- Increases through-put, highly efficient
- Allows use of positive pump for product supply

Dual Electronic Weighing System:

Two electronic scale controllers with high sample rates are used.

- Provides reliable highly accurate weight control
- Dual scale system allows continuous fill process with highest possible efficiency

Throttle Down Final Fill:

When the containers are nearly full the flow is split sending half to the next container reducing product flow rate prior to final cut-off.

- Provides highly accurate final weight

Quick Change Tooling:

Less than 5 minutes to change over from pails to bag-in-box.

- Allows for flexible production planning



Electronic Weighing System



3" Fill Valve Assembly



Automatic Infeed and Discharge



T.D. Sawvel Co. Inc.

Providing Automated Packaging Solutions Since 1976

Notes:

MODEL #113A

Specifications and Elevation Drawing

Air Requirements:

10 cfm @ 80 psi

Width:

4' 11 1/4" (150.1 cm)

Electrical Requirements:

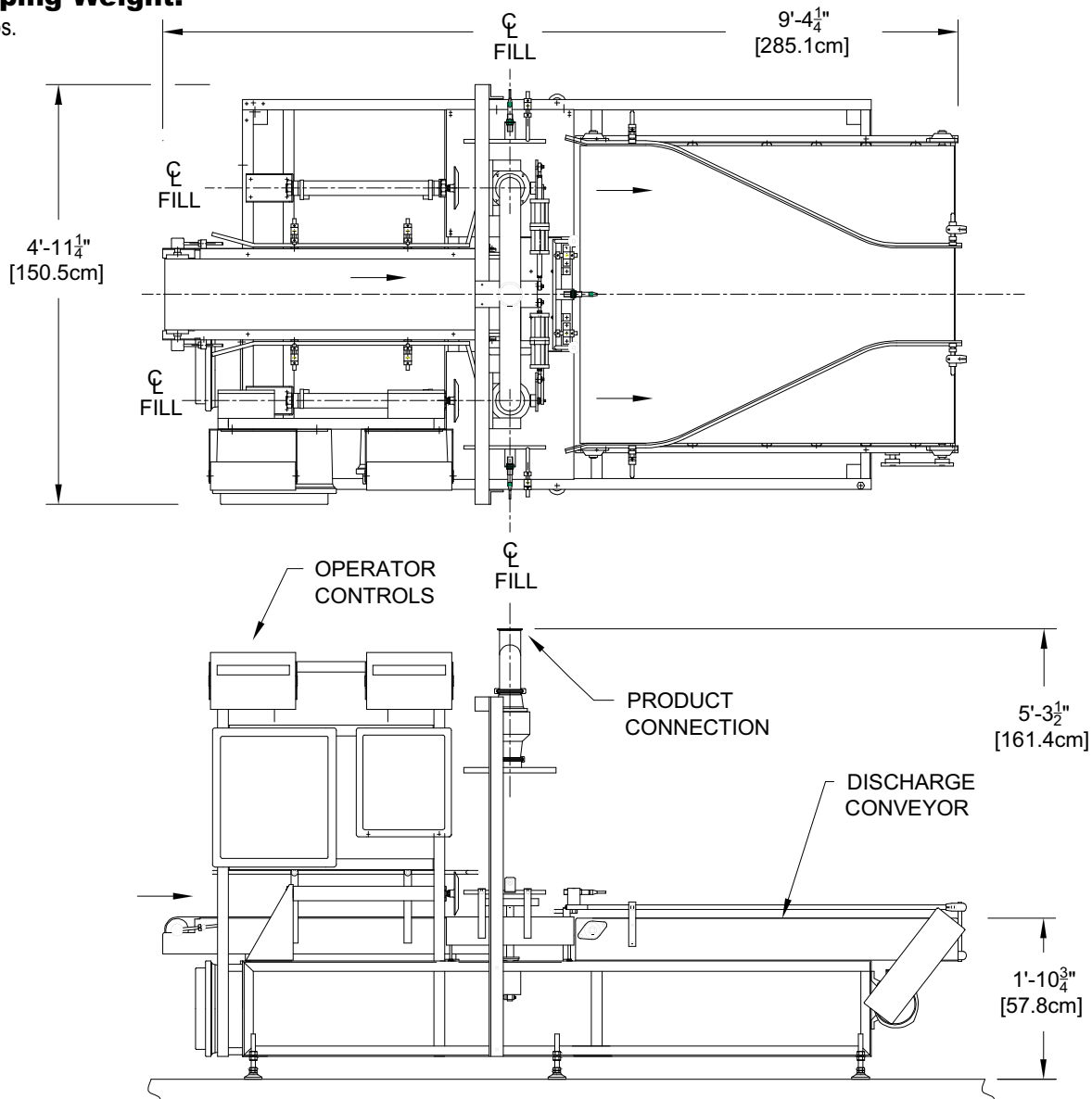
220V AC, 10 amp, 60 HZ

Length:

9' 4 1/4" (285.1 cm)

Shipping Weight:

1005 lbs.



tdsawvel.com

Toll Free: 877.488.1816 • Phone 763.479.4322 • Fax 763.479.3517 • 5775 Highway 12 West • Maple Plain, MN 55359 U.S.A