



**T.D. Sawvel Co. Inc.**

Providing Automated Packaging Solutions Since 1976

Notes:

## MODEL #111R-TF

Automatic Rotary Time Filler / Rotary Cup Filler /  
Rotary Ice Cream

### Description:

Compact mechanically driven automatic rotary filler featuring stainless steel construction, automatic denesting, automatic container transfer and time fill designed for enhanced reliability.

### Products:

Ice cream, frozen yogurt, whipped butter or similar product that does not seek its own level and can be supplied continuously.

### Key Features:

- Telescopic sniffer valve filling assembly
- Heavy duty Camco® eight station precision indexer
- Heavy duty AC inverter drive
- Simple, reliable control circuits
- Auger denester standard
- Compact footprint
- Wide range of custom tooling available
- Speeds to 75 cpm (depending on containers and product being filled)
- 304 stainless steel construction
- Affordably priced

### Container Size Range:

- 3 through 32 ounce round containers  
(maximum diameter of 5")

### Options Available:

- Flat "tab" lid feeder for dixie cups
- Pick & place foil lid applicator
- Automatic lid placing and closing
- Cup spinner
- Vibratory ingredient feeder for adding top dressing
- Tooling for additional cup sizes
- Variegators: single and dual flavor, choice of air or electric drive
- Inline blender; provides uniform color from three-barrel freezer



[tdsawvel.com](http://tdsawvel.com)

Camco® is a registered trademark of Industrial Motion Control, LLC

Toll Free: 877.488.1816 • Phone 763.479.4322 • Fax 763.479.3517 • 5775 Highway 12 West • Maple Plain, MN 55359 U.S.A



## **MODEL #111R-TF**

### Features and Benefits

#### **Telescopic Sniffer Valve Filling Assembly:**

This fill valve telescopes down three inches, opens to fill, closes, drawing product up the fill nozzle, then retracts up to the original position.

- Provides a neat, clean fill
- Eliminates the need to lift the cup at the fill station

#### **Heavy Duty Camco® Indexer:**

Table index motion is done with Camco® eight station precision indexer.

- Provides extremely smooth motion
- Very precise positioning
- Durable design, typically will run millions of trouble free cycles

#### **Simple Reliable Control Circuits:**

Four direct acting pneumatic cam valves actuated by adjustable cams are mounted for easy access. Eliminates need to adjust timing as the machine speed changes. It doesn't get any simpler than that!

- Saves you money on original purchase
- Saves you from expensive down time
- Saves you money on service trips

#### **Auger Denester:**

Pneumatically operated denester separates the cups using four augers designed to feed your container.

- Provides positive separation of each container
- Tested at speeds up to 120 cpm to assure reliability at slower production rates
- Proven design provides high reliability

#### **Compact Design:**

The base machine is 24" wide x 24" long

- Saves valuable floor space
- Keeps price affordable
- Easily moved about



Telescopic Sniffer Valve Filling Assembly



Optional Vibratory Ingredient Feeder



**T.D. Sawvel Co. Inc.**

Providing Automated Packaging Solutions Since 1976

Notes:

## MODEL #111R-TF

Specifications and Elevation Drawing

### Air Requirements:

10 cfm @ 80 psi

### Width:

36 1/8" (91.7 cm)

### Electrical Requirements:

220V AC, 3 Phase, 60 Hz, 5 amp

### Length:

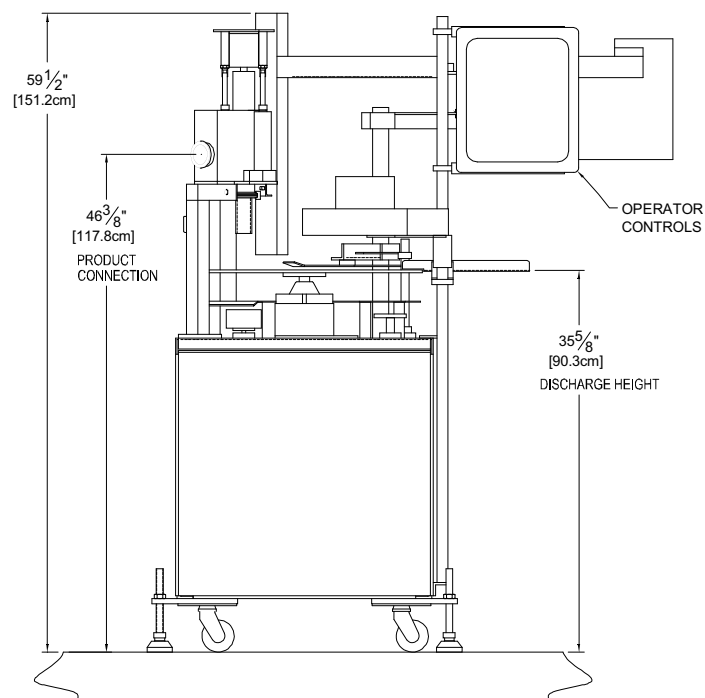
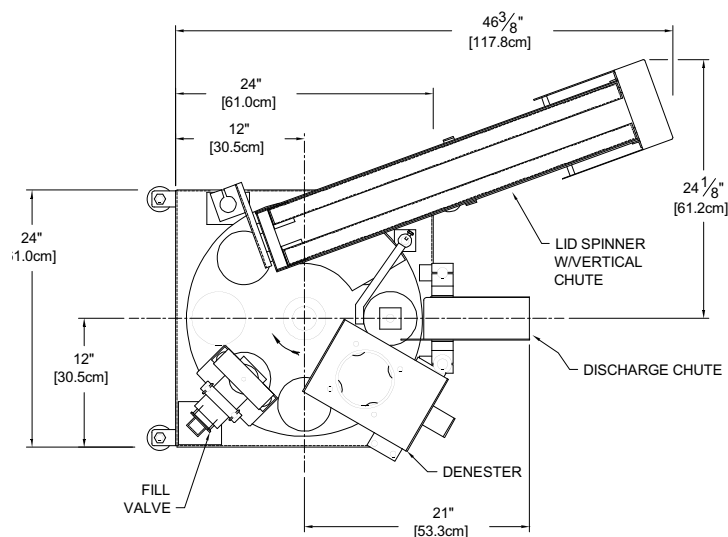
48 3/8" (117.8 cm)

### Drive / Index Type:

Camco® indexer, AC drive

### Shipping Weight:

715 lbs.



[tdsawvel.com](http://tdsawvel.com)

Camco® is a registered trademark of Industrial Motion Control, LLC

Toll Free: 877.488.1816 • Phone 763.479.4322 • Fax 763.479.3517 • 5775 Highway 12 West • Maple Plain, MN 55359 U.S.A